

# Anti-Plant-actin Mouse Antibody



<u>Catalog No.</u>	<u>Size</u>
E021110-01	100 µl
E021110-02	500 µl
E021110-03	50 ul

<b>Specificity</b>	Anti-Actin mouse (human mouse rat)
<b>Source</b>	Mouset IgG
<b>Application</b>	WB
<b>Form</b>	Liquid, 1 mg/ml

Storage Buffer & Condition: PBS, pH 7.4, containing 0.02% sodium azide as Preservative and 50% Glycerol. Store at -20°C. Do not aliquot the antibody.

Recommended dilutions: WB: 1:2,000-5,000

Optimal dilutions should be determined by the end user

Specificity: Antibody can detects endogenous plant b-actin protein.

Alternative Names: N/A

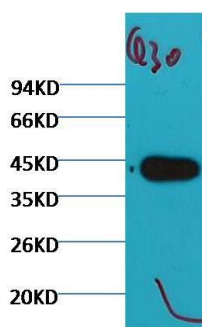
**Background:** Actin is a highly conserved protein and an essential component of cell cytoskeleton and plays an important role in cytoplasmic streaming, cell shape determination, cell division, organelle movement and extension growth. Preferentially expressed

in young and expanding tissues, floral organ primordia, developing seeds and emerging inflorescence. Antibodies against plant Actin

are useful as loading controls for Western Blotting

**Reactivity:** rhabdovirus, *Nicotiana tabacum*, *Oryza sativa*, *Hordeum vulgare*

**Predicted to work with:** *Brassica napus*, *Gossypium herbaceum*, *Solanum tuberosum*, *Setaria italica*, *Triticum monococcum*, *Brachypodium distachyon*, *Chrysanthemum seticuspe*, *Glycine max*, *Mangifera*, *Thellungiella halophila*, *Zoysia japonica*, *Isatis tinctoria*.



Western blot analysis of Arabidopsis with plant actin Mouse mAb (Q30) diluted at 1:5,000