

Anti-E2 Tag Monoclonal Antibody



| <u>Catalog No.</u> | <u>Size</u> |
|--------------------|-------------|
| E022070-01 | 100µl |
| E022070-02 | 500µl |
| E022070-03 | 50µl |

| | |
|--------------------|---|
| Specificity | Anti- E2 Tag (C-terminal internal and N-terminal) |
| Source | Mouse Monoclonal |
| Application | WB |
| Form | Liquid, 1 mg/ml |

Application Notes

Optimal working dilutions should be determined experimentally by the investigator. Suggested starting dilutions are as follows: Western blot (1:1000-1:10,000),

Source and Purification

This monoclonal antibody is produced by immunizing mice with a synthetic peptide GVSSTSSDFRDR coupled to KLH. Antibodies are purified by protein A affinity chromatography.

Specificity and Sensitivity

Anti-E2 Tag Monoclonal Antibody recognizes C-terminal, internal and N-terminal E2-tagged proteins.

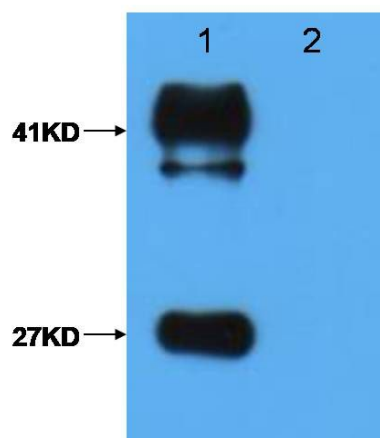
Storage Buffer

PBS, pH 7.4 with 0.05% sodium azide, 50% Glycerol.

Storage Instructions

Stable for 1 year at -20°C from date of shipment. For maximum recovery of product, centrifuge the original vial after thawing and prior to removing the cap. Aliquot to avoid repeated freezing and thawing. Aliquot will be stable at 4°C for 3 months.

Images



Lane 1 : GST-E2 fusion protein (27KD); MBP-E2 fusion protein (41KD)

Lane 2: GST protein; MBP protein