

## Anti-KT3 Tag Monoclonal Antibody



<u>Catalog No.</u>	<u>Size</u>
E022090-01	100µl
E022090-02	500µl
E022090-03	50µl

<b>Specificity</b>	Anti- KT3 Tag (C-terminal internal and N-terminal)
<b>Source</b>	Mouse Monoclonal
<b>Application</b>	WB
<b>Form</b>	Liquid, 1 mg/ml

### Application Notes

Optimal working dilutions should be determined experimentally by the investigator. Suggested starting dilutions are as follows: Western blot (1:1000-1:10,000)

### Source and Purification

This monoclonal antibody is produced by immunizing mice with a synthetic peptide KPPTPPPEPET coupled to KLH. Antibodies are purified by protein A affinity chromatography.

### Specificity and Sensitivity

Anti- KT3 Tag Monoclonal Antibody recognizes C-terminal, internal and N-terminal KT3-tagged proteins.

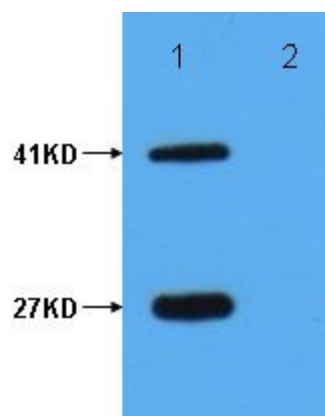
### Storage Buffer

PBS, pH 7.4 with 0.05% sodium azide, 50% Glycerol.

### Storage Instructions

Stable for 1 year at -20°C from date of shipment. For maximum recovery of product, centrifuge the original vial after thawing and prior to removing the cap. Aliquot to avoid repeated freezing and thawing. Aliquot will be stable at 4°C for 3 months.

### Images



Lane 1: GST-KT3 fusion protein (27KD); MBP-KT3 fusion protein (41KD)

Lane 2: GST protein; MBP protein